

# Smooth Transition Dock System™



**RITE·HITE®**

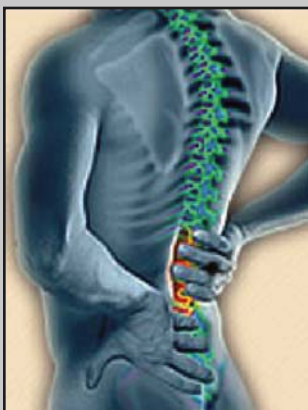
# PROBLEM — DOCK SHOCK!



Jarring that occurs when a lift truck crosses between the warehouse floor and trailer bed due to bumps and gaps that exist on traditional levelers.

## DOCK SHOCK PROBLEMS:

- Worker back and neck injuries are serious for personnel and costly for your facility
- Forklift operator muscle fatigue reduces productivity
- Product damage can reduce profits



## HOW MUCH ARE THE BUMPS AND JOLTS ON THE LOADING DOCK COSTING YOUR COMPANY?

- Severe back injuries can reach \$300,000 when a person is hurt repeatedly—a first-time back injury can cost as much as \$10,000.<sup>1</sup>
- One-fourth of all U.S. workplace injuries and illnesses are back related.<sup>2</sup>
- Approximately 31 million visits were made to physicians due to back problems in 2003, with more than 10 million visits for low back pain.<sup>3</sup>
- Musculoskeletal disorders accounted for 32 percent of all the injuries and illnesses, with a median of 10 days away from work per injury.<sup>4</sup>
- Damage to dock equipment can cost approximately \$2,000 to replace a damaged dock seal, \$1,000 to repair forklift brakes, \$400 to replace forklift tires and \$400 to replace bumpers.

<sup>1</sup>The Ohio State University, 2001 <sup>2</sup>National Safety Council, <sup>3</sup>American Academy of Orthopaedic Surgeons, <sup>4</sup>U.S. Bureau of Labor Statistics, 2004

# SOLUTION — Rite-Hite Levelers



## SMOOTH TRANSITION DOCK LEVELERS OFFER:

- A "Constant Radius" rear hinge, which reduces the gap and provides an even surface for forklifts
- Consistent, reliable lip crown does not require maintenance
- Even lip-to-deck match reduces the chance for a catch-point that can damage product and equipment
- Innovative dock leveler design with the smoothest transition decreases whole body vibration 50-70 percent



### RHH Hydraulic Dock Leveler

- Push-button operation allows dock attendant complete control over deck and lip
- Most ergonomically friendly leveler with no bending or lifting required to operate
- Automatic recycle returns leveler to safe dock position after use



### RHA Air-Powered Dock Leveler

- Convenient push-button operation to raise deck and extend lip
- Simple pull-chain operation for below-dock endloads
- Cylindrical air tower is wear-resistant for longest life
- Exclusive forward mounting provides optimum lifting efficiency



### RHM Mechanical Dock Leveler

- Simple pull-chain operation with smooth operator walk-down
- Heavy-duty ramp control includes 9-tooth pawl and ratchet bar hold-down system
- Structural safety stops protect uncontrolled free-fall

# PROBLEM — Trailer Drop

*Vertical trailer movement or “drop” that occurs due to the weight of lift trucks traveling in and out of unstable trailers.*

## TRAILER MOVEMENT

- Trailer beds can move significantly in the vertical direction or “drop” up to 8" during loading and unloading, especially on trailers equipped with air-ride suspensions
- Air-ride suspension linkage moves forward, creating horizontal movement
- Catastrophic trailer separation accidents can occur when trailers are not properly secured to the dock



**An unstabilized trailer can drop significantly with the weight of a forklift and load**

## DANGERS ASSOCIATED WITH TRAILER DROP

- Chronic back and neck injuries can result from trailer bounce
- Product can be jostled causing damage
- Trailer abrades dock seals and bumpers due to the vertical movement

## SOLUTION — STR-4000 Dok-Lok® Vehicle Restraint



**STR-4000 stabilizes the rear of the trailer and securely engages the rear-impact guard**

- Stabilizes the rear of the trailer using durable hydraulic cylinders to minimize trailer drop, creating a smoother transition
- Reduces jolts to forklift operators during loading/unloading by restricting trailer movement
- Helps prevent catastrophic trailer separation accidents, including:
  - Unscheduled departure
  - Dock walk/trailer creep
  - Trailer tipover
  - Trailer pop up
  - Trailer upending
  - Landing gear collapse



For more information on the Smooth Transition Dok System, visit [www.smoothdok.com](http://www.smoothdok.com)

RITE-HITE® is a registered trademark of the RITE-HITE Corporation. RITE-HITE reserves the right to make product improvements without prior notice.

Contact: Rite-Hite Corporation 8900 North Arbon Drive Milwaukee, WI 53223 USA (414) 355-2600 FAX: (414) 355-9248 [www.ritehite.com](http://www.ritehite.com)

Mailing Address: Rite-Hite Corporation P.O. Box 245020 Milwaukee, WI 53224 USA

**(800) 456-0600**